

Specifications

| Item | Specifications |
|----------------------|--|
| Optical system | UIS2 (Universal Infinity System) optical system |
| Illumination System | Built-in transmitted illumination system 6 V 20 W halogen bulb 100-240 V 50/60 Hz universal voltage |
| Focusing | Stage height movement (coarse movement stroke 20 mm) Fine focus graduation: 2.5 μm |
| Revolving Nosepiece | Fixed quadruple nosepiece |
| Stage | Wire movement mechanical fixed stage: 120x132 mm Traveling range: 76 mm (X) x 30 mm (Y) Single specimen holder |
| Observation Tube | 30° inclined binocular tube Interpupillary distance adjustment range 48–75 mm |
| Condenser | Abbe type with aperture iris diaphragm N.A.: 1.25 |
| Objective | Plan Achromatic objectives (anti-fungus) 4x N.A.: 0.10 W.D.: 18.5 mm 10x N.A.: 0.25 W.D.: 10.6 mm 40x N.A.: 0.65 W.D.: 0.6 mm 100x N.A.: 1.25 W.D.: 0.13 mm (option) |
| Eyepiece (10x) | Field Number (F.N.): 18 (anti-fungus) |
| Optional Accessories | Mirror unit, 15x eyepiece (F.N. 12, anti-fungus), cord rest, wooden storage box, filar micrometer, wire pointer, filter holder, darkfield stop |

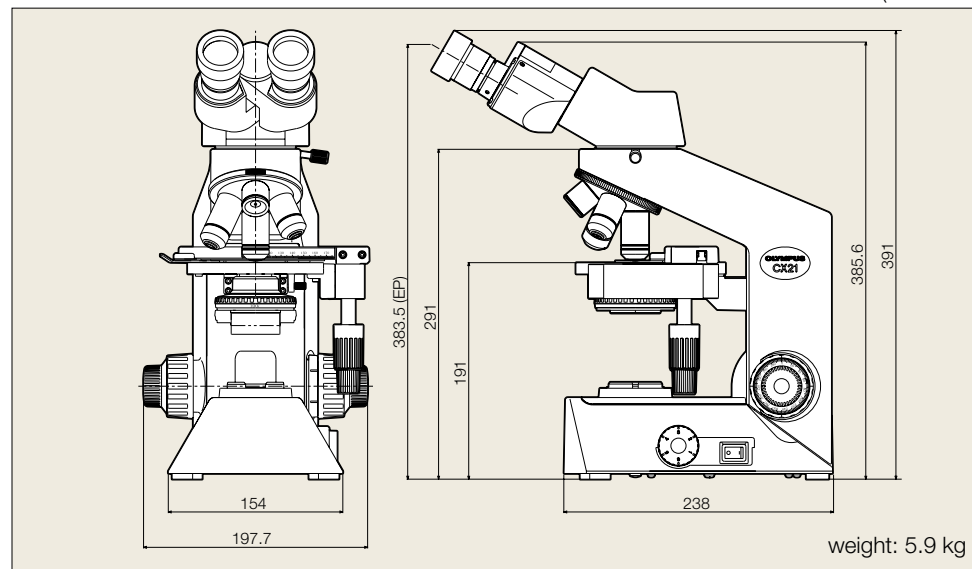
Wooden storage box

A wooden storage box is available as an optional accessory. It is convenient, sturdy and includes a handle for easy carrying. Dimensions: 264 (W) x 305 (D) x 474 (H) mm



Dimensions

(unit: mm)



Safety & Electromagnetic radiation standards

The CX21 meets or exceeds UL/ICC/CE standards for safety and for electromagnetic radiation.

OLYMPUS®

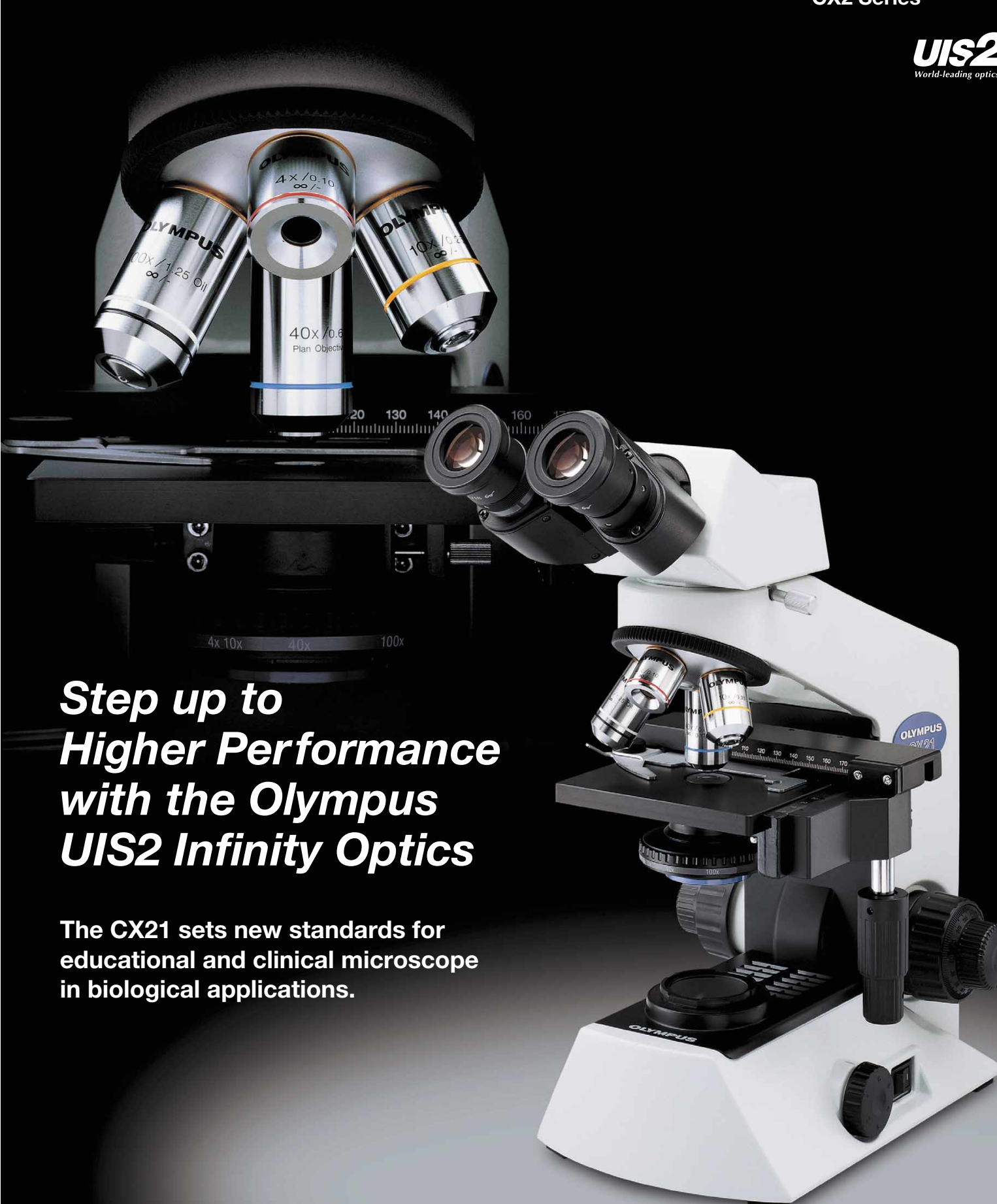
Your Vision, Our Future

Biological Microscope

CX21

CX2 Series

UIS2
World-leading optics



**Step up to
Higher Performance
with the Olympus
UIS2 Infinity Optics**

**The CX21 sets new standards for
educational and clinical microscope
in biological applications.**



CX21 is the environmental conscious product according to OLYMPUS' own standards.

Main features of OLYMPUS Eco-products are as follows.

- Lead-free and arsenic-free Eco-glass for optics, such as lenses and prisms.
- Adoption of cardboard for packing materials without styrene foam for promoting the recycling.

* Some accessories are inapplicable.

ECO-PRODUCTS

Please visit our web site for further information: <http://www.olympus.co.jp/en/eco-products/>

- OLYMPUS CORPORATION has obtained the ISO9001/ISO14001.

- Illumination devices for microscope have suggested lifetimes. Periodic inspections are required. Please visit our web site for details.

- Specifications and appearances are subject to change without any notice or obligation on the part of the manufacturer.

OLYMPUS®

OLYMPUS CORPORATION
Shinjuku Monolith, 3-1, Nishi Shinjuku 2-chome, Shinjuku-ku, Tokyo, Japan
OLYMPUS EUROPA HOLDING GMBH
Wendenstrasse 14-18, 20097 Hamburg, Germany
OLYMPUS AMERICA INC.
3500 Corporate Parkway, Center Valley, Pennsylvania 18034-0610, U.S.A.
OLYMPUS SINGAPORE PTE LTD.
491B River Valley Road, #12-01/04 Valley Point Office Tower, Singapore 248373

OLYMPUS AUSTRALIA PTY. LTD.
31 Gilby Road, Mt. Waverley, VIC 3149, Melbourne, Australia.
OLYMPUS LATIN AMERICA, INC.
5301 Blue Lagoon Drive, Suite 290 Miami, FL 33126, U.S.A.
OLYMPUS (CHINA) CO., LTD.
A8F, Ping An International Financial Center, No. 1-3, Xinyuan South Road, Chaoyang District, Beijing, China, 100027

www.olympus.com

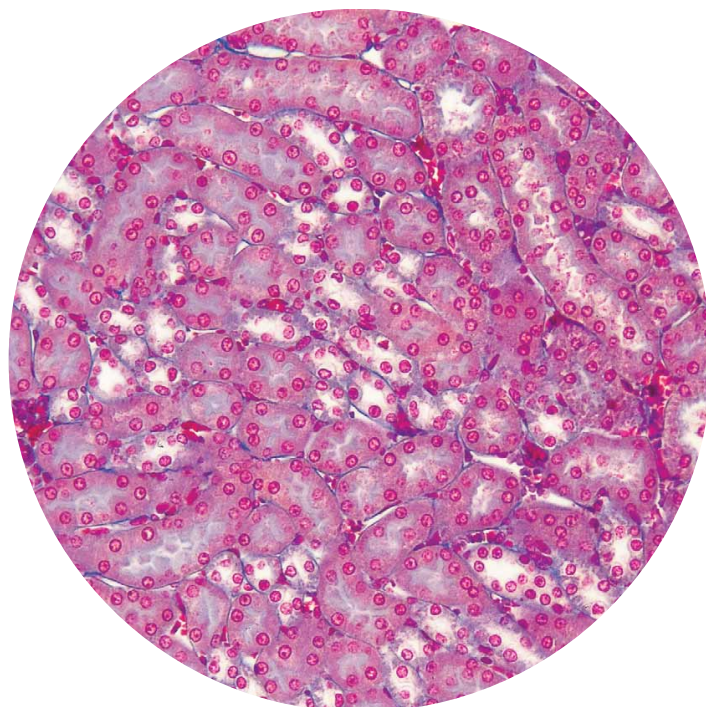
Printed in Japan M3455E-0310B

Superb image clarity coupled with Olympus' renowned reliability and rigidity

Superior imaging

Plan objectives are packaged as standard, providing image flatness that is among the best in this class

The CX21 is equipped with the same UIS2 optical system used in Olympus' top-level microscopes. In addition, Plan Achromat objectives are included as standard for the first time in this class of microscope, providing sharp images with high contrast right up to the edge of the field of view.



Bright, uniform illumination

The CX21's 6V20W high intensity halogen lamp delivers clear, stable illumination. The built-in aspheric collector lens provides images that are bright and uniformly illuminated over the entire field of view.

Abbe condenser for optimized contrast

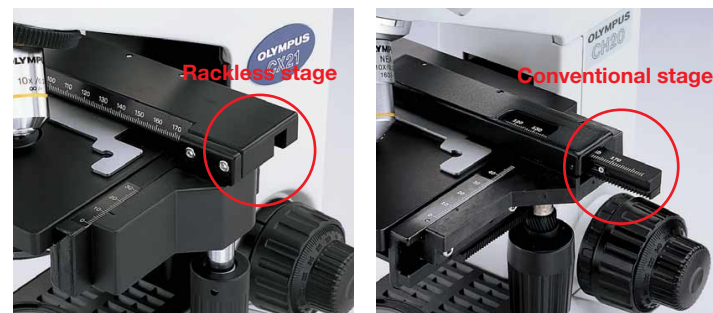
The optimal aperture stop position for each objective is clearly marked on the Abbe condenser, resulting in high-resolution, high-contrast images.



Easy, safe operation

Rackless stage for durability and ease of use

The wire-driven stage movement avoids any protrusion of racks — preventing the possibility of accidental damage or hand injury. Abrasion-resistant rackless design ensures continuous smooth movement.



Component security — Student proof!

The eyepieces, objectives and condenser are all factory attached to the microscope body ensuring that no component is dropped or detached during transportation or regular use.



Ultra-smooth, quadruple revolving nosepiece

High-precision machining ensures smooth operation and durability. Nosepiece includes a rubber ring for an easy ergonomic grip.



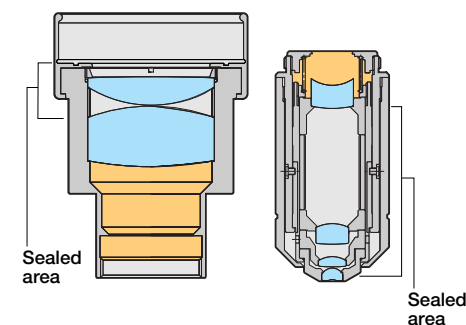
Mechanical stage focus-lock prevents mishaps

The focus position can be locked making it easy to refocus when the specimen is changed. With the upper stage position locked, there is no chance of the objective accidentally touching the slide and damaging either the specimen or the objective itself.

Use in any environment

Anti-fungus treatment for component durability

An effective anti-fungus treatment is applied to the objectives, eyepieces and observation tube for consistent image clarity and long operating life even in hot humid work conditions.



Compact design, easy to store and carry

The CX21 is only 391 mm high, compact enough to be stored in a typical classroom cabinet. A cord-rest and wooden storage box are also available as an option, for convenient storage and portability.



Mirror unit allows observation with no power source

Attachment of the optional mirror unit allows observations to be made even when no power source is available. When an external light source is used, the observation head can be reversed and the slide can be viewed through a large opening in the arm.



Suitable for any user

Individual choice of adjustment

Binocular observation tube is inclined 30 degrees allowing for an ergonomic, comfortable posture during observation. Eyepieces can be easily set for multiple users with a scaled interpupillary distance adjustment and diopter setting. High eyepoint design eyepieces with F.N.18 can be used comfortably without removing eyeglasses.



Tension adjustment for smoother focusing

The coaxial coarse/fine focusing knob is operable from either the left or right side. Coarse movement tension can be adjusted in accordance with personal preference.

Ergonomic design for user convenience

The focusing knob, light control adjustment knob and stage handle are located close together, the user can work with hands on the desk and operate the CX21 with minimal movement.

